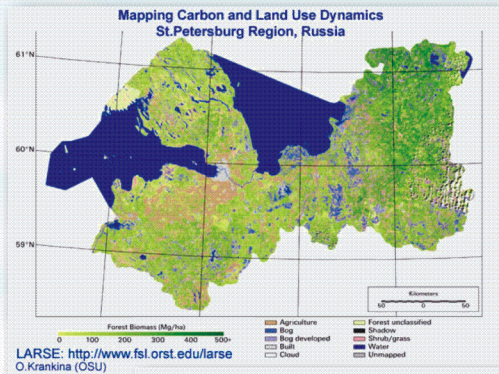
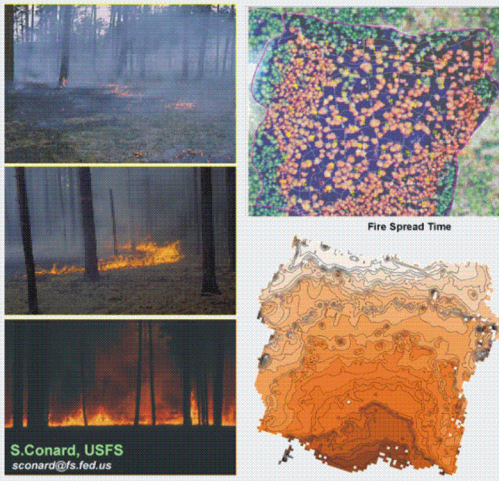


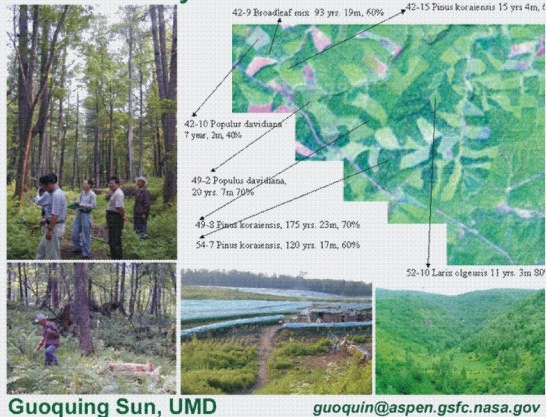
Examples of Northern Eurasia Projects :



Fire Severity: Carbon Cycling, Emissions, Forest Health and Sustainability-Siberia



Forest Dynamics in NE China



NEESPI Program Development

- General Plan of Activities
 - Conduct Science Planning Workshops and engage international contributions to science plan development
 - Draft and publish a working NEESPI Science Plan
 - Fund new and ongoing Northern Eurasia studies using existing funding mechanisms
 - Solicit additional support from government and private research organizations
 - Prepare and publish solicitations for integrated program of research
 - Fund and Implement a well-integrated, regional program of research
 - Conduct science conferences for Northern Eurasia Earth Science research

Current Charter Partners

NASA
Russian Academy of Sciences

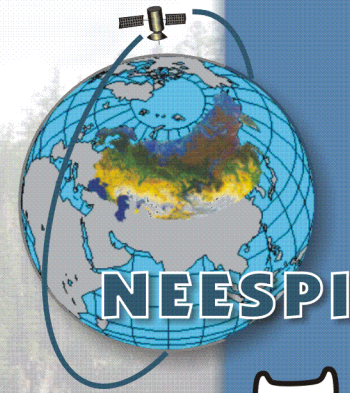
For more information contact :

Dr. Donald W. Deering
Donald.Deering@nasa.gov
NASA, Goddard Space Flight Center
Ph: 301 614 6671; Fax: 301 614 6695
or
Dr. Alexander G. Georgiadi
galex@online.ru
RAS, Institute of Geography
Ph: 095 959 0022; Fax: 095 95 90 033

OR, visit the NEESPI Web Site : :

NEESPI Web Site :
<http://neespi.gsfc.nasa.gov>

Northern Eurasia Earth Science Partnership Initiative



N
E
E
S
P
I

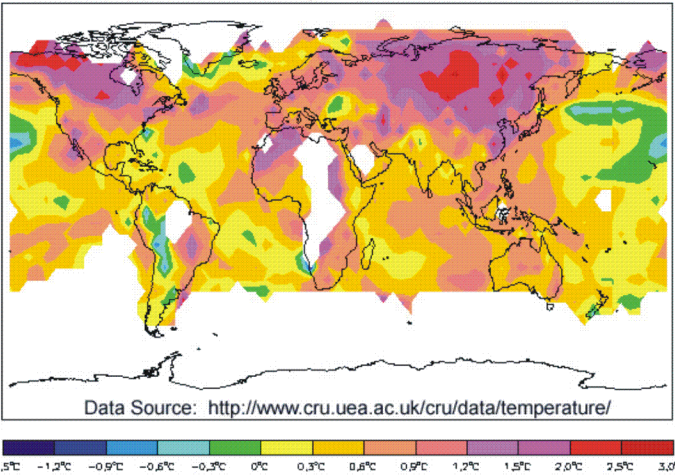
Mission

The Northern Eurasia Earth Science Partnership Initiative (NEESPI) will identify the critical science questions and establish a program of coordinated research on the state and dynamics of terrestrial ecosystems in northern Eurasia and their interactions with the Earth's climate system to enhance scientific knowledge and develop predictive capabilities to support informed decision-making and practical applications

Northern Eurasia

- ecosystems are extensive, dynamic and have significant potential effects on the Earth system
- and is experiencing some of the most dramatic expressions of climate change on the Earth

Mean Temperature Change - 1965-2002 over the globe



NEESPI Motivations

- Science issues for Northern Eurasia are growing in global importance, especially related to climate change
- Generally, detached international research projects are conducted in this huge, biologically, hydrologically, climatically complicated region with large area covered by permafrost
- Earth system research over this vast region is inadequately funded and requires coordination and multinational support

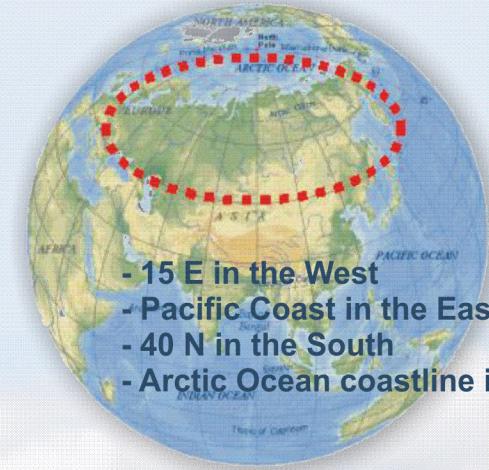
NEESPI Goals

- Establish a large-scale, interdisciplinary program of funded research aimed at developing a better understanding of the interactions between the ecosystem, atmosphere, and human dynamics in northern Eurasia in support of international science programs with particular relevance to Global Climate Change research interests and funding priorities (e.g., within NASA).
- Develop a science plan, initially based on U.S. and Russia Earth Science research funding priorities.
- Assess institutions, information and infrastructure resources in Russia and other northern Eurasia territories to support the science plan and develop a joint project / mission plan.
- Identify funding vehicles for science elements from a variety of U.S., Russia, and other international sources
- Prepare research proposals to secure project funding: "pilot" projects in the early stages; large-scale integrated project as the project matures.
- Develop international agreements that facilitate joint research collaboration and mission implementation within Russia and other countries of the Northern Eurasia
- Implement a high-speed information and data exchange network capability to support planning and project implementation.
- Develop an exchange program for participants

Synoptic Science Question

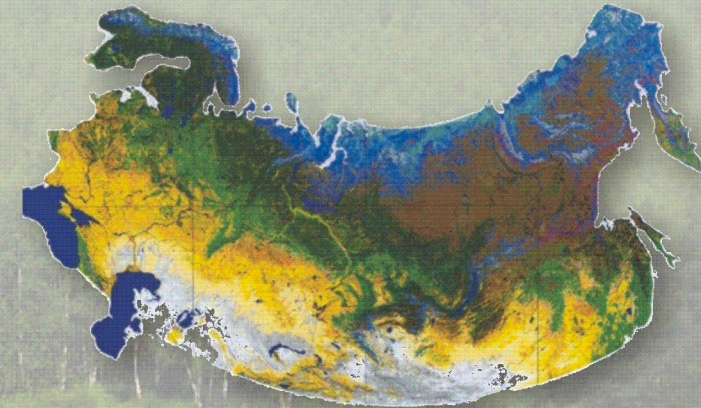
"How do Northern Eurasia's land ecosystem and continental water dynamics interact with and alter biosphere, atmosphere and hydrosphere of the Earth?"

NEESPI Study Area



- 15 E in the West
- Pacific Coast in the East
- 40 N in the South
- Arctic Ocean coastline in the North

- boreal forests, forests
- peatlands
- permafrost territory
- bog-tundra
- lakes, rivers, coastal zones
- forest-steppe, steppe
- arid and agriculture zones



Source : European Commission, Joint Research Center, <http://www.jrc.cec.eu.int>

NEESPI's Role

To provide the "framework" for developing an integrated understanding of the Earth system for this part of the globe